

15.21.12
N/F
JOHN MIHALOPOULOS
HELEN MIHALOPOULOS
M.L.R. VOL. 515 PG. 102

15.21.13
N/F
JOHN MIHALOPOULOS
HELEN MIHALOPOULOS
M.L.R. VOL. 290 PG. 344

15.21.13
N/F
JOHN MIHALOPOULOS
HELEN MIHALOPOULOS
M.L.R. VOL. 290 PG. 344

15.21.14
N/F
JOHN MIHALOPOULOS
HELEN MIHALOPOULOS
M.L.R. VOL. 228 PG. 469

15.23.8
N/F
K. SHAH SATARI
M.L.R. VOL. 311 PG. 397

TYPE 'C' CURB
T.F. = 332.29
F.L. = 531.01 6"x12" BOX NE
F.L. = 530.96 6"x12" BOX NW
F.L. = 528.11 15" RCP SE

CP # 7139
PK N/A
N 855371.92
E 1132247.29
ELEV. = 531.48

NO.	DATE	DESCRIPTION	BY

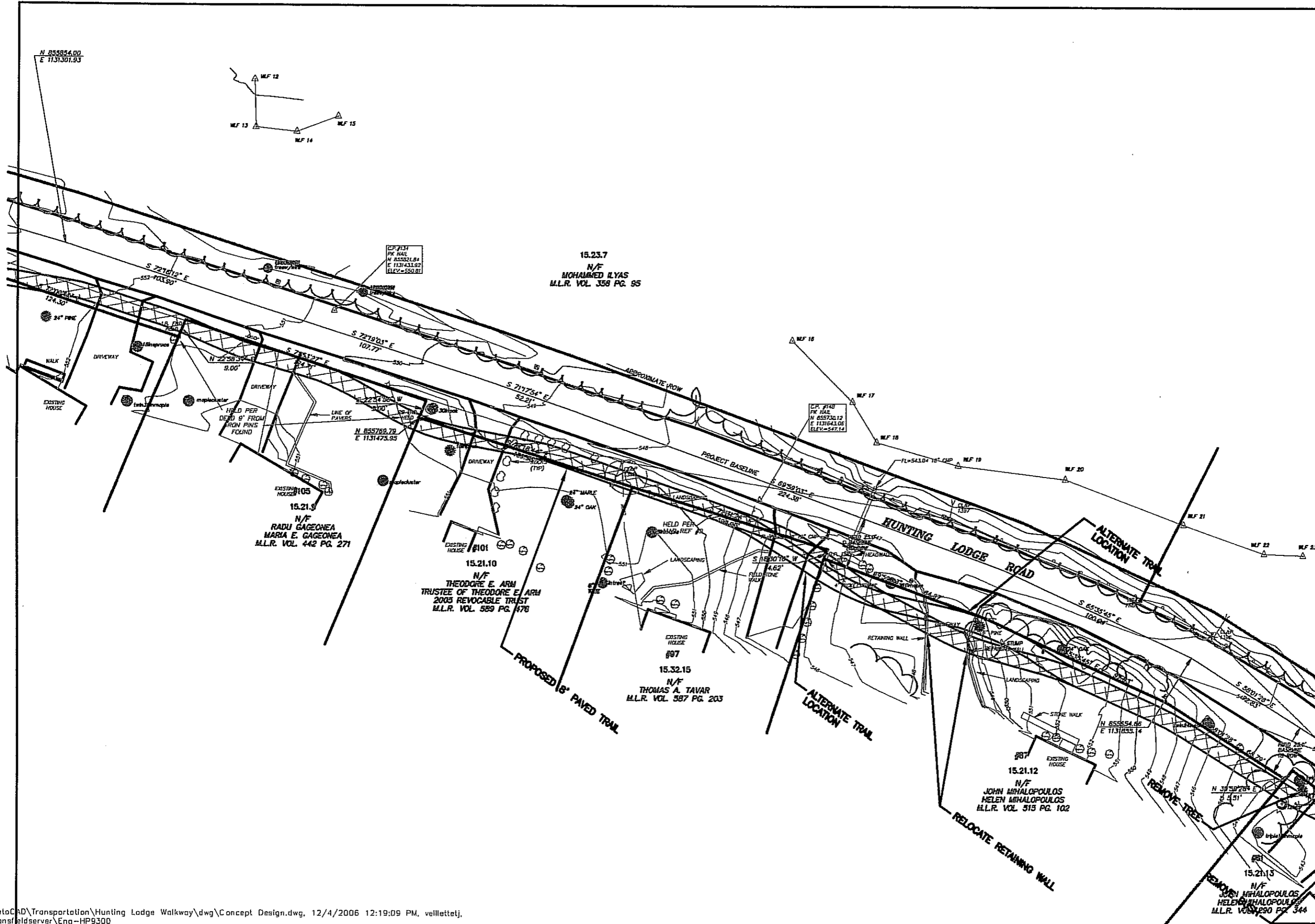
DESIGNER: T. VEILLETTE
DRAFTER: T. VEILLETTE
CHECKED BY: L. HULTGREN
DATE CHECKED: 08/28/06

TOWN OF MANSFIELD
DEPARTMENT OF PUBLIC WORKS
AUDREY P. BECK BUILDING
FOUR SOUTH EAGLEVILLE ROAD
MANSFIELD, CONNECTICUT 06266
PUBLIC WORKS MANUFACTURING
DATE: 12/11/06
APPROVED BY: (Signature)
(860) 439-3331

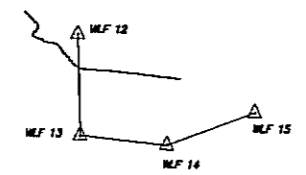


HUNTING LODGE ROAD BIKEWAY
FROM
NORTH EAGLEVILLE ROAD
TO
CARRIAGE HOUSE DRIVE
SCALE: 1"=40'
DATE: 12/11/06
ENR: CONCEPT DESIGN DWG

N:\AutoCAD\Transportation\Hunting Lodge Walkway\dwg\Concept Design.dwg, 12/4/2006 12:09:27 PM, veilletelj, \\mansfieldserver\Eng-HP9300



N 855854.00
E 1131301.93



15.23.7
N/F
MOHAMMED RYAS
M.L.R. VOL. 358 PG. 95

15.21.9
N/F
RADU GAGEONEA
MARIA E. GAGEONEA
M.L.R. VOL. 442 PG. 271

15.21.10
N/F
THEODORE E. ARM
TRUSTEE OF THEODORE E. ARM
2005 REVOCABLE TRUST
M.L.R. VOL. 589 PG. 178

15.32.15
N/F
THOMAS A. TAVAR
M.L.R. VOL. 587 PG. 203

15.21.12
N/F
JOHN MHALOPOULOS
HELEN MHALOPOULOS
M.L.R. VOL. 515 PG. 102

15.21.13
N/F
JOHN MHALOPOULOS
HELEN MHALOPOULOS
M.L.R. VOL. 515 PG. 102

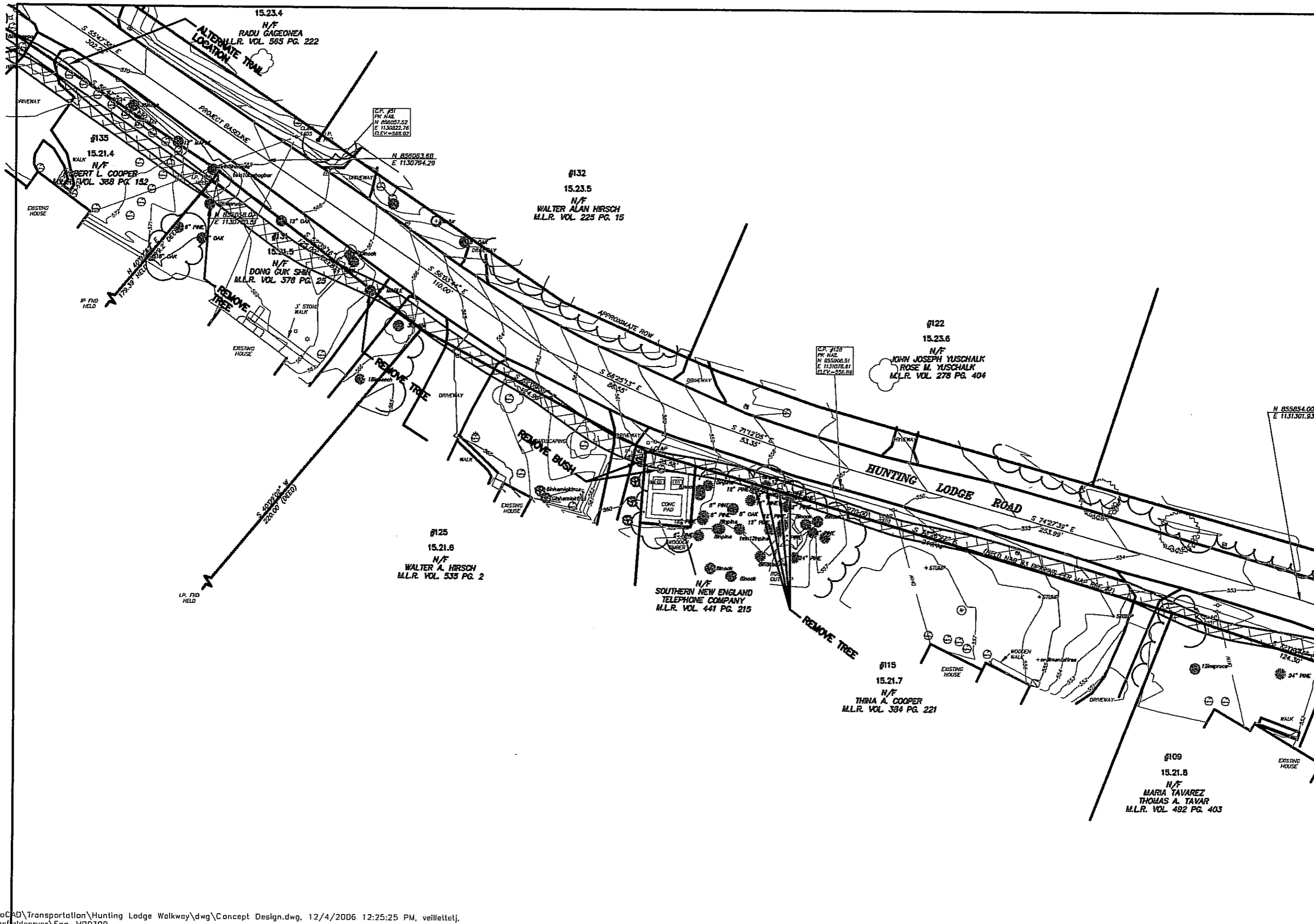
NO.	DATE	DESCRIPTION	BY

DESIGNER: T. VELETTE
DRAFTER: T. VELETTE
CHECKED BY: L. HULTGREN
DATE CHECKED: 08/28/06
PK/TK/PK

TOWN OF MANSFIELD
DEPARTMENT OF PUBLIC WORKS
ALFRED P. BECK BUILDING
FOURTH FLOOR
MANSFIELD, CONNECTICUT 06268
PUBLICWORKS@MANSFIELD.CT.GOV
DATE: 12/11/06
APPROVED BY: (860) 428-3331



HUNTING LODGE ROAD BIKEWAY
FROM
NORTH EAGLEVILLE ROAD
TO
CARRIAGE HOUSE DRIVE
DATE: 12/11/06
DWG: CONCEPT DESIGN.DWG
SHEET 2 OF 6
NTS



DESIGNER: L. VELLLETTE		TOWN OF MANSFIELD DEPARTMENT OF PUBLIC WORKS AUDREY P. BECK BUILDING FOUR SOUTH EAGLEVILLE ROAD MANSFIELD, CONNECTICUT 06269 (860) 426-3311 APPROVED BY:	NO.	DATE	DESCRIPTION	BY
DRAWN: T. VELLLETTE						
CHECKED BY: L. HULTOREN						
DATE CHECKED: 06/26/06						
HUNTING LODGE ROAD BIKEWAY FROM NORTH EAGLEVILLE ROAD TO CARRIAGE HOUSE DRIVE		PUBLIC WORKS FIELD NO. DATE:				
SCALE: 1" = 40' DATE: 12/11/06 DRAWN: CONCEPT DESIGNING		NTS SHEET 3 OF 8				

#153
15.21.2
N/F
SAVE HAVENS, INC.
M.L.R. VOL. 371 PG. 265

#146
15.23.2
N/F
THOMAS A. TAVAR
M.L.R. VOL. 489 PG. 488


15.23.3
N/F
MARTY L. COLES
M.L.R. VOL. 366 PG. 163

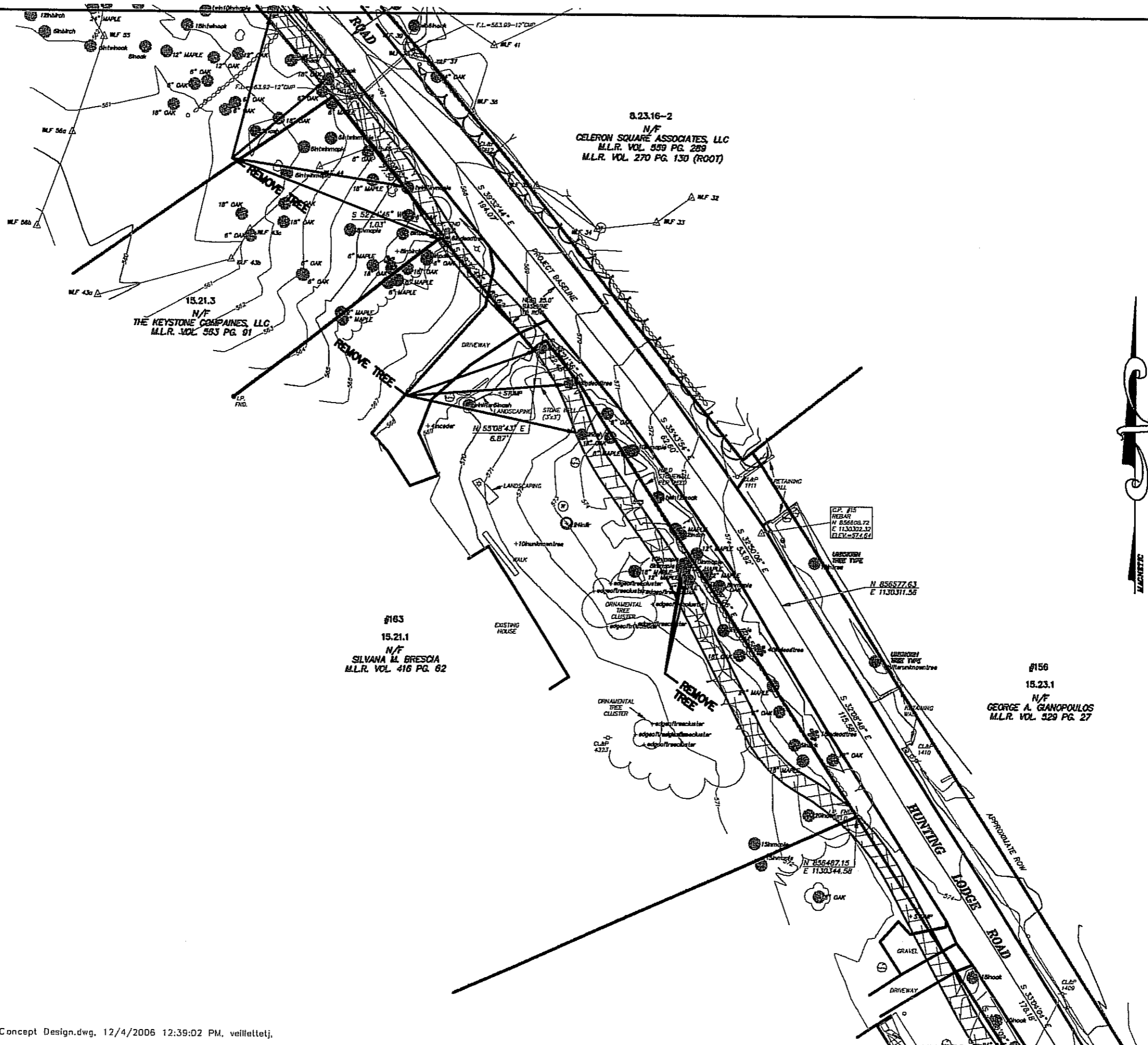
15.21.3
N/F
THE KEYSTONE COMPANIES, LLC
M.L.R. VOL. 583 PG. 91

15.23.4
N/F
RADU GAGEOHEA
M.L.R. VOL. 565 PG. 222

#135
15.21.4
N/F
ROBERT L. COOPER
M.L.R. VOL. 300 PG. 152

15.21.5
N/F
DONG GIUK SHEN
M.L.R. VOL. 376 PG. 23

DESIGNER: L. VELLETT		NO.		DATE		DESCRIPTION		BY	
DRAFTER: L. VELLETT		NO.		DATE		DESCRIPTION		BY	
CHECKED BY: L. HULTORSEN		NO.		DATE		DESCRIPTION		BY	
DATE CHECKED: 12/11/06		NO.		DATE		DESCRIPTION		BY	
TOWN OF MANSFIELD DEPARTMENT OF PUBLIC WORKS AUDREY P. BECK BUILDING FOUR SOUTH EAGLEVILLE ROAD MANSFIELD, CONNECTICUT 06268 (860) 426-3331 APPROVED BY: _____ DATE: _____									
									
HUNTING LODGE ROAD BIKEWAY FROM NORTH EAGLEVILLE ROAD TO CARRIAGE HOUSE DRIVE DATE: 12/11/06 SCALE: _____ DESIGNED BY: _____ DATE: 12/11/06 NTS									
SHEET 4 OF 8									



0.23.16-2
 N/F
 CELERON SQUARE ASSOCIATES, LLC
 M.L.R. VOL. 559 PG. 289
 M.L.R. VOL. 270 PG. 130 (ROOT)

15.21.3
 N/F
 THE KEYSTONE COMPANIES, LLC
 M.L.R. VOL. 583 PG. 91

#163
 15.21.1
 N/F
 SILVANA M. BRESCIA
 M.L.R. VOL. 416 PG. 62

#156
 15.23.1
 N/F
 GEORGE A. GIANPOULOS
 M.L.R. VOL. 529 PG. 27



NO.	DATE	DESCRIPTION	BY

DESIGNER: T. VELLETT
 DRAFTER: T. VELLETT
 CHECKED BY: L. HULLIGREN
 DATE CHECKED: 08/26/06

TOWN OF MANSFIELD
DEPARTMENT OF PUBLIC WORKS
 AUBREY B. BECK BUILDING
 FOUR SOUTH EAGLEVILLE ROAD
 MANSFIELD, CONNECTICUT 06268

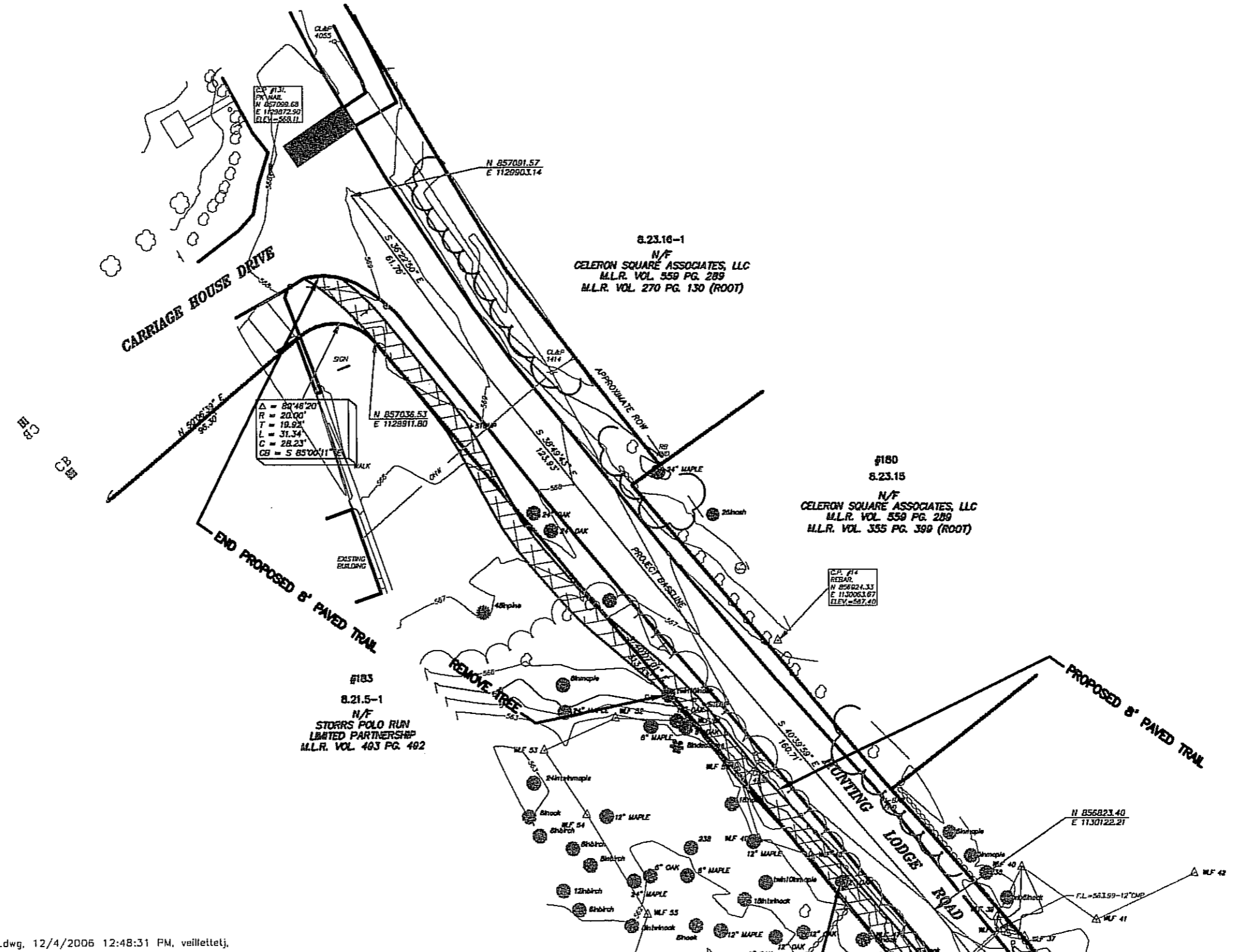
DATE: 12/11/06
 APPROVED BY: [Signature]



HUNTING LODGE ROAD BIKEWAY
 FROM
 NORTH EAGLEVILLE ROAD
 TO
 CARRIAGE HOUSE DRIVE

SCALE: [Symbol] DATE: 12/11/06
 DESIGNED BY: [Signature] DATE: 12/11/06
 DRAWN BY: [Signature] DATE: 12/11/06

N:\AutoCAD\Transportation\Hunting Lodge Walkway\dwg\Concept Design.dwg, 12/4/2006 12:39:02 PM, veilletelj,
 \\mansfieldserver\Eng-HP9300



C.P. #13
 P.V. 1448
 N 857009.63
 E 1129072.50
 ELEV = 558.11

N 857001.57
 E 1129003.14

8.23.16-1
 N/F
 CELERON SQUARE ASSOCIATES, LLC
 M.L.R. VOL. 559 PG. 289
 M.L.R. VOL. 270 PG. 130 (ROOT)

Δ = 80°48'20"
 R = 20.00'
 T = 19.92'
 L = 31.34'
 C = 28.23'
 CB = 5 85°00'11"

N 857036.53
 E 1129911.80


#180
 8.23.15
 N/F
 CELERON SQUARE ASSOCIATES, LLC
 M.L.R. VOL. 559 PG. 289
 M.L.R. VOL. 355 PG. 399 (ROOT)

C.P. #14
 REBAR
 N 856824.33
 E 1120053.67
 ELEV = 587.40

#183
 8.21.5-1
 N/F
 STORRS POLO RUN
 LIMITED PARTNERSHIP
 M.L.R. VOL. 493 PG. 492

N 856823.40
 E 1130122.21

F.L. = 581.99 - 12' CMP

DESIGNER: L. VEILLETTE		NO.		DATE		DESCRIPTION		BY	
DRAWN: L. VEILLETTE									
CHECKED BY: L. HULTOSEN									
DATE CHECKED: 05/08/06									
TOWN OF MANSFIELD DEPARTMENT OF PUBLIC WORKS AUDREY P. BECK, BUILDING FOUR SOUTH EAGLEVILLE ROAD MANSFIELD, CONNECTICUT 06268 PUBLIC WORKS MANIFESTATION DATE:									
 HUNTING LODGE ROAD BIKEWAY FROM NORTH EAGLEVILLE ROAD TO CARRIAGE HOUSE DRIVE SCALE: 1" = 40' DATE: 12/11/06 DWG: CONCEPT DESIGN.DWG APPROVED BY:									
NTS SHEET 6 OF 8									